

ESSO Annuitant Hiking Club

Trail name(s):	Takakkaw Falls, Iceline Trail, Yoho Valley, Twin Falls
Hike Date:	July 11, 2013
Trail Planner:	Rick and Angela Wards
References:	Gem Trek Lake Louise – Yoho 1:5000; http://www.pc.gc.ca/eng/pn-np/bc/yoho/index.aspx
Trail Access:	Takakkwa Falls Parking Lot,
Washrooms:	Takakkwa Falls- Note: As we are trying to reduce overall travelling time as much as possible, there will not be a bathroom break at Lake Louise, so please refrain from too much coffee or anticipate using the onboard facilities.
Trip Duration	Due to possible delays on the TransCanada Highway and the normally 2.5 hour drive to Takakkaw Falls, we do not anticipate arriving back in Calgary before 6:30 p.m. Our scheduled departure time from Takakkaw falls will be 3:50 p.m. This should allow a minimum of 4.5 hours of hiking time.

Hike Summary	A1/A2 (Op1)	A1/A2 (Op2)	B1	B2	C1/2
Total Distance (km.)	19.9+	18.8	16.4	13.2+	8.6
Elevation Gain* (m)	725+	725	305	~150	~100
(Equiv. Flat Distance (km.))	27.1	26	19.5	14.7	9.6
Difficulty Rating	Difficult	Difficult	Difficult	Moderate	Moderate

* Actual elevation gain from start to highest point unless otherwise noted.

Group	Km.	Elev	Iceline Trail — Route Description
A1/A2 Option 1	0	1515	Note: As of the latest trail report the Iceline Trail is “Not Recommended” due to snow patches on the trail. The Iceline Trail starts just north of the Whiskey Jack Youth Hostel Two options are possible depending on the time available. The first is to do a circuit via the Iceline Trail, Celeste Trail, Little Yoho Valley Trail and Yoho Valley Trail. Total distance of this route is 16.4 km with an elevation gain of 705 m (cumulative gain of ~850 m) The second and longer option is to remain on the Iceline Trail into Little Yoho Valley (Stanley Mitchell Hut) and return via the Little Yoho Valley and Yoho Valley Trails. The total distance for this route is 19.9 km with an elevation gain of 725 m.(cumulative gain of ~880 m)
Option	5.7	2220	Celeste Trail Intersection – for the shorter option take the Celeste Trail to the Little Yoho Valley Trail and return to the parking lot via the Yoho Valley Trail.
	16.4	1515	Takakkaw Falls Parking Lot
Option			Stay on the Iceline Trail for the second option and arrive at
	10.5	2060	Little Yoho Valley - Stanley Mitchell Hut - Grid reference: 303081
	15.5	1640	Laughing Falls, Yoho Valley Trail
	19.9	1515	Takakkaw Falls Parking Lot

Group	Km.	Elev	Little Yoho Valley — Route Description
A1/A2 Option 2	0	1515	This option will avoid the Iceline Trail to take you into Little Yoho Valley via the Yoho Valley and Little Yoho Valley trails. This route also provides for a more gradual ascent with less cumulative elevation gain. However, the views are not as spectacular.

ESSO Annuitant Hiking Club

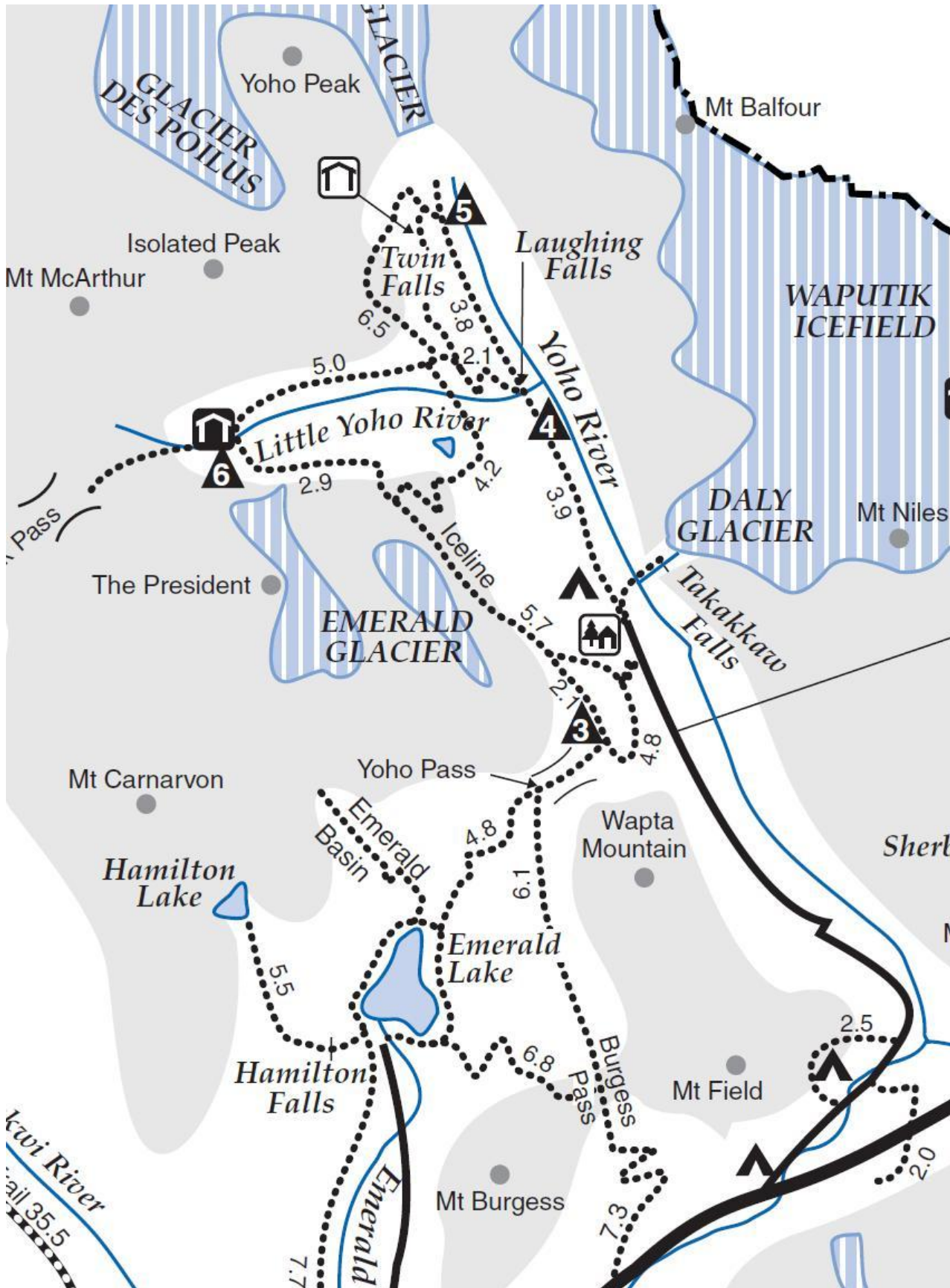
	4.5	1635	Little Yoho Valley Trail Intersection
	9.4	2060	Stanley Mitchell Hut
	18.8	1515	Return via the same route to the Takakkaw Falls Parking Lot

Group	Km.	Elev.	Laughing Falls, Twin Falls, Marpole Connector (Option) — Route Description
B1	0.0	1515	The trail starts at the Takakkaw Falls parking lot. This classic hike will take you by Point Lace Falls, Laughing Falls and Twin Falls Campground to the Historic Twin Falls Tea House. From the Twin Falls Tea House you have the option of returning by the same route or optionally by way of the Marpole Connector, which will add 0.7 km and 150 m elevation gain. If time is limited you will also have the option of going only as far as the Twin Falls Campground and returning by the same route.
	4.3	1600	Laughing Falls
	6.6	1660	Twin Falls Campground
Option	13.2	1515	Return by the same route to the Takakkaw Falls Parking Lot
Option	8.2	1820	Continue from the Twin Falls Campground to the Twin Falls Tea House, located 100 m past the Whaleback Trail intersection.
	16.4	1515	Return by the same route to the Takakkaw Falls Parking Lot
Option	17.3	1515	From the Tea House take the Marpole Connector to the Little Yoho Valley Trail and then the Yoho Valley Trail to the Takakkaw Falls parking lot

Group	Km.	Elev.	Laughing Falls, Twin Falls Campground — Route Description
B2	0.0	1515	Take the Yoho Valley Trail from the Takakkaw Falls parking lot. This hike will take you by Point Lace Falls, Laughing Falls to the Twin Falls Campground where there is a view of Twin Falls.
	2.2	1560	Point Lace Falls — take the 200 m side trip to these picturesque falls.
	4.3	1600	Laughing Falls - option to take the 0.4 km diversion to Duchesnay Lake.
	6.6	1660	Twin Falls Campground
	13.2	1515	Return by the same route to the Takakkaw Falls Parking Lot

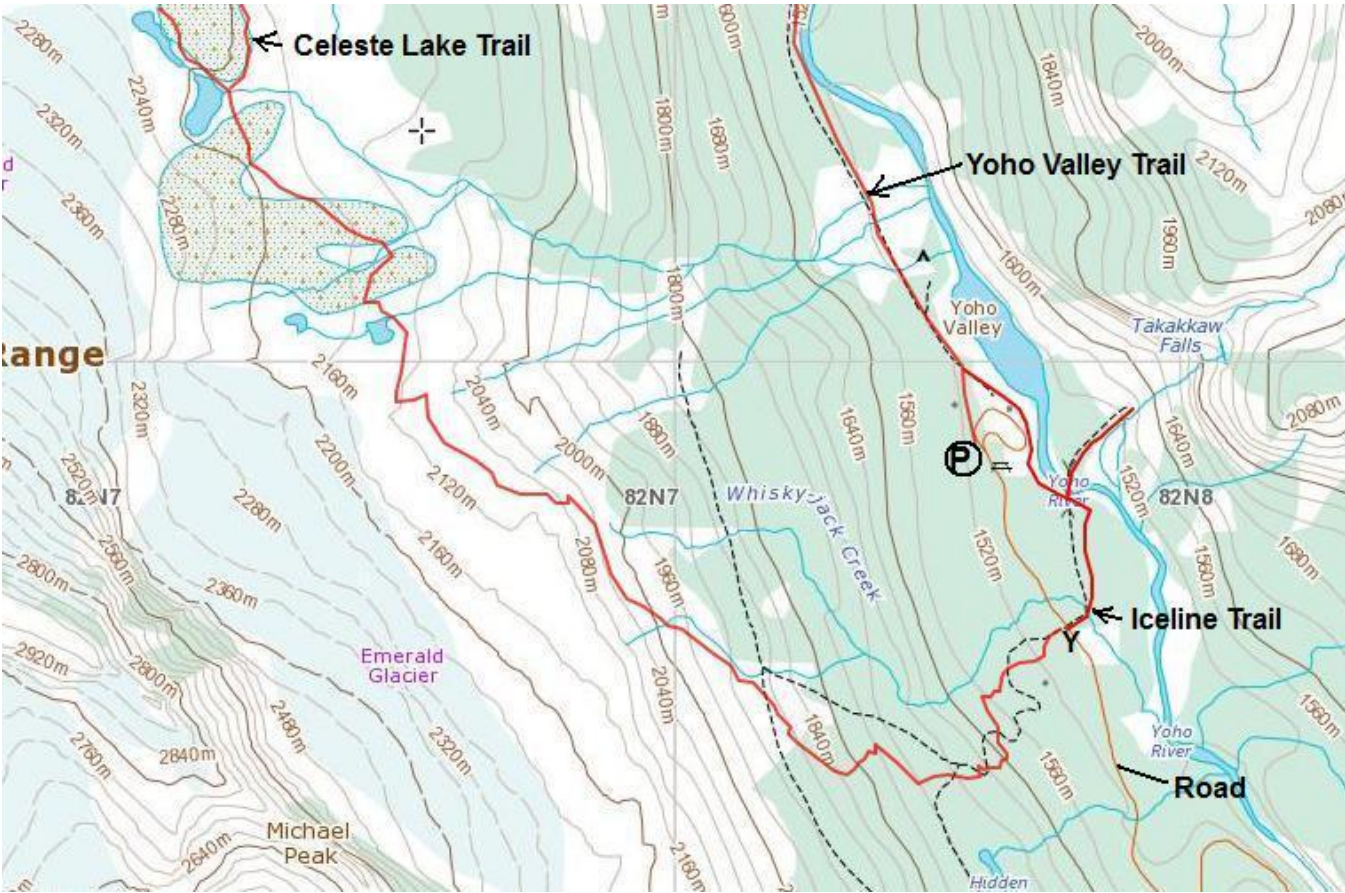
Group	Km.	Elev.	Yoho Valley Trail, Laughing Falls — Route Description
Cs	0.0	1515	Take the Yoho Valley Trail from the Takakkaw Falls parking lot. This hike will take you by Point Lace Falls to Laughing Falls.
	2.2	1560	Point Lace Falls — take the 200 m side trip to these picturesque falls.
	4.3	1600	Laughing Falls — option to take the 0.4 km diversion to Duchesnay Lake.
	8.6	1515	Return by the same route to the Takakkaw Falls Parking Lot
			From the Parking lot there also is a 0.6 km long trail that will take you close to the base of Takakkaw Falls.

ESSO Annuitant Hiking Club



ESSO Annuitant Hiking Club

MAP 2 Start of Trails



ESSO Annuitant Hiking Club

MAP 3 Twin Falls and Little Yoho Valley

